

Pre-installation press image form

Noguchi

Barbican Art Gallery, London, UK

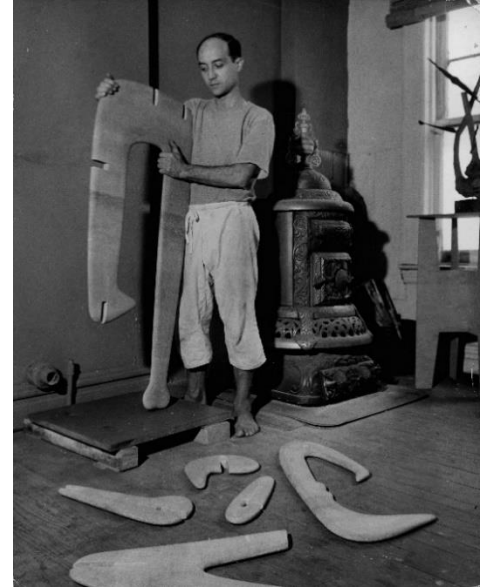
30 September 2021 – 23 January 2022

#Noguchi @barbicancentre

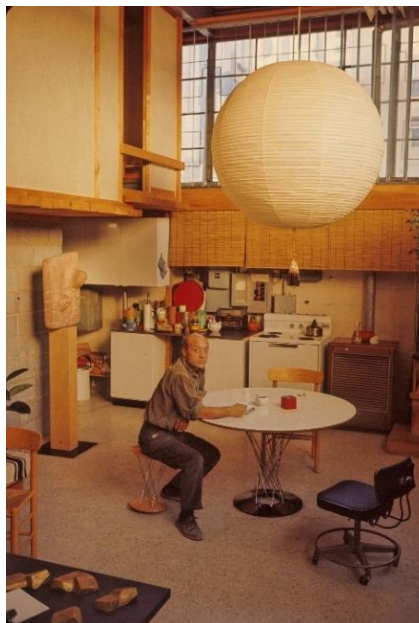
Please contact the press office for high res copies – details below



1. Portrait of Isamu Noguchi, 4 July 1947
 Photograph by Arnold Newman
 © Arnold Newman Collection / Getty Images / INFGM / ARS - DACS



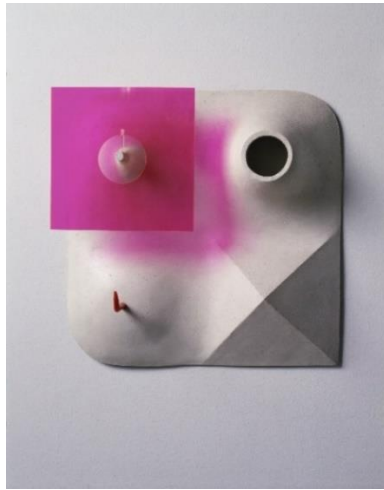
2. Isamu Noguchi assembling "Figure" in his MacDougal Alley studio, 1944
 Photograph by Rudolph Burckhardt
 The Noguchi Museum Archives, 03765
 ©INFGM / ARS - DACS / Estate of Rudolph Burckhardt



3. Isamu Noguchi in his 10th Street, Long Island City, Queens Studio, 1964
 Photograph by Dan Budnik
 The Noguchi Museum Archives, 07281
 ©2021 The Estate of Dan Budnik. All Rights Reserved / INFGM / ARS - DACS



4. Isamu Noguchi tests *Slide Mantra* at "Isamu Noguchi: What is Sculpture?", 1986 Venice Biennale
 Photograph by Michio Noguchi
 The Noguchi Museum Archives, 144398
 ©INFGM / ARS - DACS



5. Isamu Noguchi, *My Arizona* (second state with original elements), 1943
Fiberglass, Plexiglas, 46.4 x 46.4 x 11.7 cm
Photograph by Kevin Noble
The Noguchi Museum Archives, 00071
©INFGM / ARS - DACS



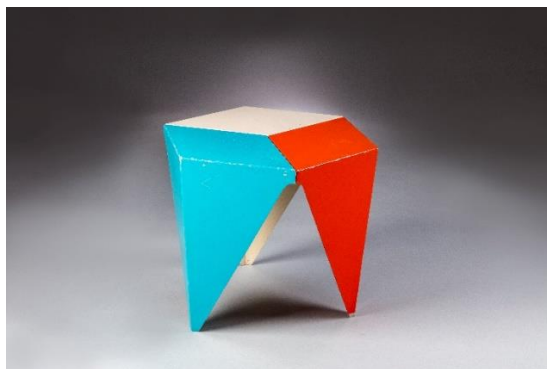
6. Isamu Noguchi, *Lunar Infant*, 1944.
Magnesite, wood, electric components, 55.9 x 40.6 x 40.6 cm
Photograph by Kevin Noble
The Noguchi Museum Archives, 150797
©INFGM / ARS - DACS



7. Isamu Noguchi, *Trinity (Triple)*, 1945 (fabricated 1988)
Bronze plate, 141.6 x 56.5 x 49.5 cm
Photograph by Kevin Noble
The Noguchi Museum Archives, 9891
©INFGM / ARS - DACS



8. Isamu Noguchi, *Humpty Dumpty*, 1946
Ribbon slate, 149.9 x 52.7 x 44.5 cm
Purchase Inv. N.: 47.7a-e
Whitney Museum of American Art / Licensed by
Scala ©INFGM / ARS - DACS



9. *Alcoa Forecast Program Table*, 1957
Painted aluminum, 37.47 x 46.99 x 40.60cm
Carnegie Museum of Art, Pittsburgh: Gift of Torrence M. Hunt, Sr., 2004.9.2
© INFGM / ARS, New York/SPDA, Tokyo



10. Isamu Noguchi, *The Queen*, 1931
Terra Cotta, 111.4 x 42.9 x 39.4 cm
Photograph by Kevin Noble
The Noguchi Museum Archives, 00011
Whitney Museum of American Art / Licensed by
Scala ©INFGM / ARS - DACS



11. Isamu Noguchi with study for Luminous Plastic Sculpture, 1943
 Photograph by Eliot Elisofon
 The Noguchi Museum Archives, 03766
 ©INFGM / ARS – DACS / Eliot Elisofon



12. Isamu Noguchi, *Akari 25N*, 1968
 117 x 83 cm
 Photograph by Kevin Noble
 The Noguchi Museum Archives, 03066
 ©INFGM / ARS - DACS



13. AKARI (1953)
 Models; 27N, 2N, BB3-70FF, BB2-S1 14A, BB1-YA1, 31N
 Paper, bamboo, metal
 ©INFGM / ARS – DACS / The Kagawa Museum



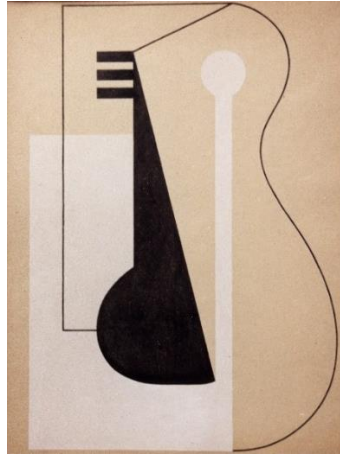
14. Isamu Noguchi, Manufactured by Zenith Radio Corp. Radio Nurse and Guardian Ear, 1937
 Bakelite.
Radio Nurse: 21 x 17.1 x 15.9 cm
Guardian Ear: 15.9 x 10.8 x 21 cm
 Photograph by Kevin Noble
 ©INFGM / ARS – DACS



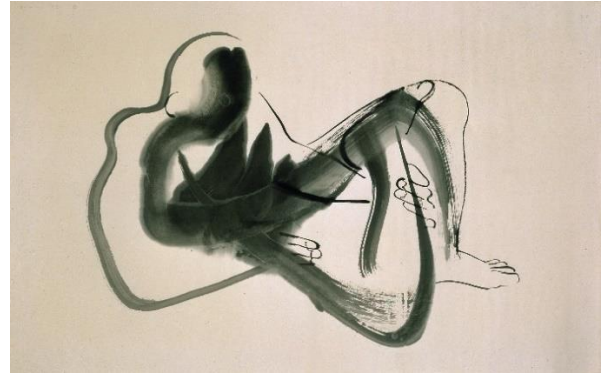
15. Isamu Noguchi, *Boy Looking Through Legs (Morning Exercises)*, 1933
 Pear wood, blue beads, 72.4 x 18.7 x 18.1 cm
 Photograph by Kevin Noble
 The Noguchi Museum Archives, 147079
 ©INFGM / ARS - DACS



16. Isamu Noguchi, *Sculpture To Be Seen From Mars*, 1947
 Sand, Dimensions unknown
 Photograph by Soichi Sunami.
 The Noguchi Museum Archives, 01646
 ©INFGM / ARS – DACS



17. Isamu Noguchi, *Paris Abstraction*, 1927-1928
Gouache on paper, 65.4 x 50.2 cm
Photograph by Kevin Noble
The Noguchi Museum Archives, 02635
©INFGM / ARS - DACS



18. Isamu Noguchi, *Peking Brush Drawing*, 1930
Ink on paper, 89.2 x 146.1 cm
Photograph by Kevin Noble
The Noguchi Museum Archives, 01213
©INFGM / ARS - DACS



19. Isamu Noguchi, *History Mexico*, 1936
Cement, pigment, 236.9 x 2206 x 25.01 cm
Photograph Rafael Gamo
The Noguchi Museum Archives, 152293
©INFGM / ARS - DACS



20. Isamu Noguchi, *R. Buckminster Fuller*, 1929
Bronze, chrome plate, 33.7 x 20 x 25.4 cm
Photograph by F.S. Lincoln
The Noguchi Museum Archives, 01411
©INFGM / ARS - DACS / Penn State University Libraries



21. Martha Graham with *Spider Dress and Serpent* for Martha Graham's "Cave of the Heart", 1946
Photograph by Cris Alexander
The Noguchi Museum Archives, 01619
©INFGM / ARS - DACS



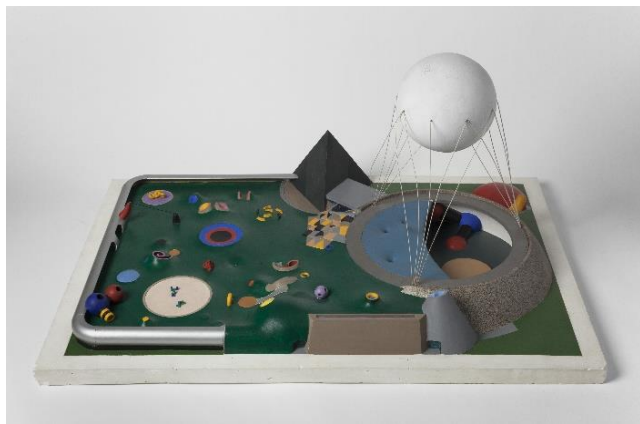
22. Ruth Page in *The Expanding Universe: Costume Sack*, 1932.
Wool jersey
Photograph by F.S. Lincoln
The Noguchi Museum Archives, 01455
©INFGM / ARS - DACS / Penn State University Libraries



23. Samrat Yantra, Jantar Mantar; Bollingen Travels; New Delhi, India, 1949
Photograph by Isamu Noguchi
The Noguchi Museum Archives, 08447.3
©INFGM / ARS - DACS



24. Isamu Noguchi in Machu Picchu, Peru, 1983
Photograph by Michio Noguchi
The Noguchi Museum Archives, 06974
©INFGM / ARS - DACS



25. Isamu Noguchi, *U.S. Pavilion Expo '70 (Garden of the Moon)*, 1968
Plaster, wire, paint. 40.3 x 58.4 x 83.8 cm
Photograph by Peter Moore
The Noguchi Museum Archives, 147232
©INFGM / ARS - DACS



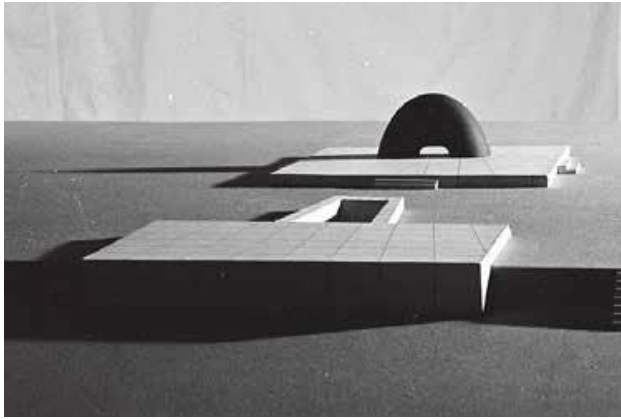
26. Isamu Noguchi, *Sunken Garden for Beinecke Rare Book and Manuscript Library*, 1960-1964
Exterior design with Imperial Danby marble
Photograph by Ezra Stoller / ESTO
The Noguchi Museum Archives, 01898
©INFGM / ARS - DACS / ESTO



27. Isamu Noguchi (design) *Octetra* Play Equipment, Moerenuma Park, Japan
Photograph by Toshishige Mizoguchi
© Toshishige Mizoguchi / INFGM / ARS - DACS



28. Isamu Noguchi (design) with Shoji Sadao (architect), *Play Equipment* at Moerenuma Koen, 1988-2004. Sapporo, Japan.
©INFGM / ARS - DACS



29. Isamu Noguchi, *Model for Memorial to the Dead, Hiroshima*, 1952
Plaster, Dimensions unknown
Photography by Isamu Noguchi
The Noguchi Museum Archives, 08834.5
©INFGM / ARS - DACS



30. Isamu Noguchi, *Chess Table* (IN-61), 1944
Ebonized plywood, cast aluminum, plastic insets.
48.3 x 69.8 x 64.8 cm
Photograph by Kevin Noble
The Noguchi Museum Archives, 00856
©INFGM / ARS - DACS

IMPORTANT CREDIT AND PICTURE INFORMATION

These images may only be used for publicity purposes in connection with ***Noguchi***, Barbican Art Gallery, 30 September 2021 – 23 January 2022. The images may NOT be cropped, bled off the page, overprinted with text, or altered in any way and may not be passed to any third parties without further permission. All caption information, as given beneath each image, **MUST** appear whenever an image is reproduced.

If you have any queries please contact either:

Ann Berni, Senior Communications Manager

+44 (0) 207 382 7169, ann.berni@barbican.org.uk

Daisy Robinson-Smyth, Communications Assistant

+44 (0) 207 382 7254, daisy.robinson@barbican.org.uk

Jemima Yong, Communications Assistant

+44 (0) 207 638 4141 ext 8280,

Jemima.yong@barbican.org.uk

AFTER USING AN IMAGE/S FOR PUBLICATION

Please email a link or PDF of your article to us

Or send a copy to:

Communications - Visual Arts

Barbican Centre

Silk Street, London, EC2Y 8DS

Thank you for your help with maintaining our records, we look forward to hearing from you

www.barbican.org.uk

Barbican Newsroom

All Barbican Centre press releases, news

announcements and the Media Relations team's contact details are listed on our website at

www.barbican.org.uk/news